
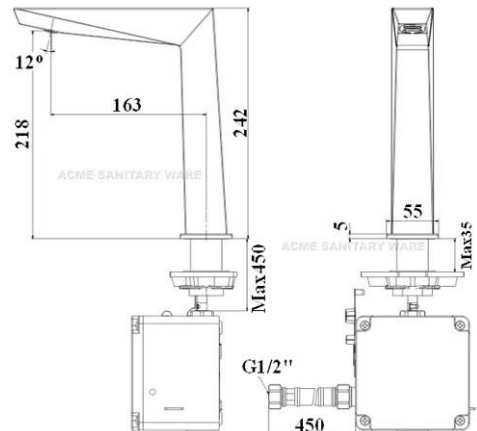




PROJECT		REF		REV	ITEM CODE	
LOCATION		DATE			PAGE	

SANITARY WARE SPECIFICATION SHEET

Item Descriptions	American Standard (PRC) Chrome plated extend sensor faucet with Line-Sensor Technology, AC 220V	Illustration/ Drawing
Dimensions	L163 x W55 x H242 mm	
Model	CF-8510.A00.50	
Finish	Chrome Plated	
Manufacturer	American Standard (PRC)	
Source	Acme Sanitary Ware Co. Ltd Mr. Eric Wong / Mr. Don Yuen	
Contact Tel/Fax	(852) 2388-7171 / (852) 2710-8012	
E-mail	acme@acmesanitary.com.hk	
Website	www.acmesanitary.com.hk	
<p>Line sensor at the spout With PCA aerator to ensure stable water flow under high pressure Safety stop at 59 sec AC 220V,</p> <ul style="list-style-type: none"> Consisting of 64-light receiving elements mounted in a straight line at the spout, American Standard's Line Sensor comes equipped with Image Processing Technology to provide unmatched sensor precision compared to a conventional sensor faucet. The streamlined designed faucets also feature aerated water flow to prevent water splashing, offering you an unparalleled experience of both aesthetics and performance for your commercial projects. 		

Note:

* All information of the above is for the reference only. No prior notice is made if any changes.



Acme Sanitary Ware Co. Ltd.

1/F, Acme Building, 22-28 Nanking Street, Kowloon, Hong Kong

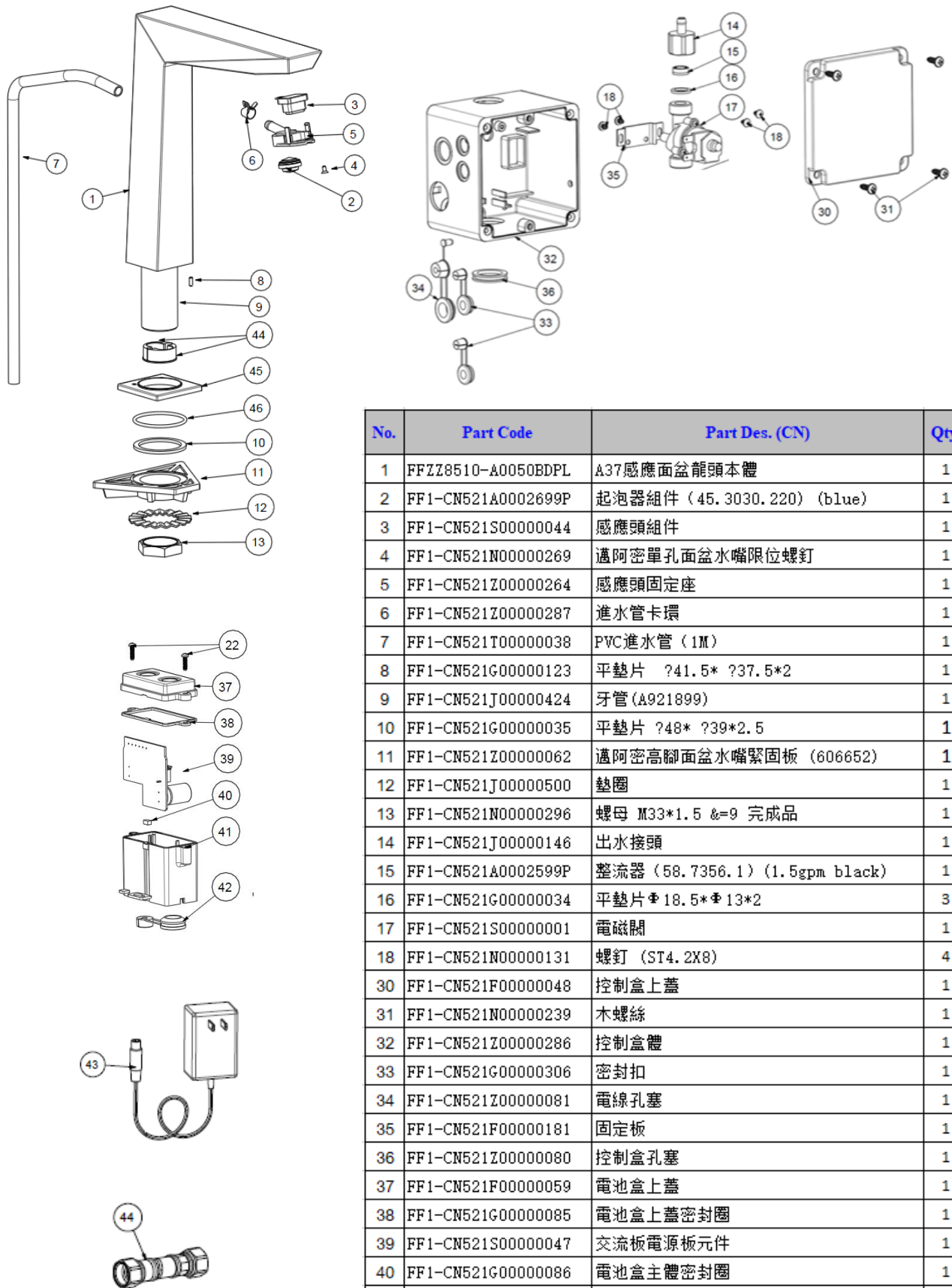
Tel: 2388 7171 Fax: 2710 8012

Email: acme@acmesanitary.com.hk

Website: www.acmesanitary.com.hk

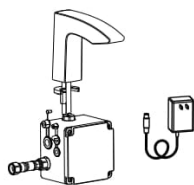
Since 1949

American Standard

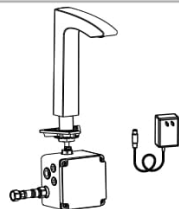


No.	Part Code	Part Des. (CN)	Qty.
1	FFZZ8510-A0050BDPL	A37感應面盆龍頭本體	1
2	FF1-CN521A0002699P	起泡器組件 (45.3030.220) (blue)	1
3	FF1-CN521S00000044	感應頭組件	1
4	FF1-CN521N00000269	邁阿密單孔面盆水嘴限位螺釘	1
5	FF1-CN521Z00000264	感應頭固定座	1
6	FF1-CN521Z00000287	進水管卡環	1
7	FF1-CN521T00000038	PVC進水管 (1M)	1
8	FF1-CN521G00000123	平墊片 741.5* 737.5*2	1
9	FF1-CN521J00000424	牙管 (A921899)	1
10	FF1-CN521G00000035	平墊片 748* 739*2.5	1
11	FF1-CN521Z00000062	邁阿密高腳面盆水嘴緊固板 (606652)	1
12	FF1-CN521J00000500	墊圈	1
13	FF1-CN521N00000296	螺母 M33*1.5 &=9 完成品	1
14	FF1-CN521J00000146	出水接頭	1
15	FF1-CN521A0002599P	整流器 (58.7356.1) (1.5gpm black)	1
16	FF1-CN521G00000034	平墊片 18.5*13*2	3
17	FF1-CN521S00000001	電磁閥	1
18	FF1-CN521N00000131	螺釘 (ST4.2X8)	4
30	FF1-CN521F00000048	控制盒上蓋	1
31	FF1-CN521N00000239	木螺絲	1
32	FF1-CN521Z00000286	控制盒體	1
33	FF1-CN521G00000306	密封扣	1
34	FF1-CN521Z00000081	電線孔塞	1
35	FF1-CN521F00000181	固定板	1
36	FF1-CN521Z00000080	控制盒孔塞	1
37	FF1-CN521F00000059	電池盒上蓋	1
38	FF1-CN521G00000085	電池盒上蓋密封圈	1
39	FF1-CN521S00000047	交流板電源板元件	1
40	FF1-CN521G00000086	電池盒主體密封圈	1
41	FF1-CN521Z00000057	電池盒主體	1
42	FF1-CN521Z00000079	電池盒孔塞	1
43	FF1-CN522S00000399	交流電源	4
44	FF1-CN521T00000008	進水軟管 1/2inch*45	1

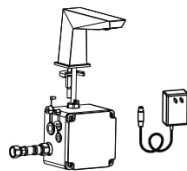
* All information of the above is for the reference only. No prior notice is made if any changes.



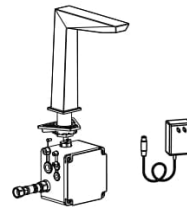
WF-8506.A00.50
line-sensor technology sensor
faucet (AC)



WF-8507.A00.50
line-sensor technology extend
sensor faucet (AC)

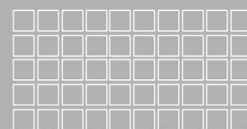


WF-8509.A00.50
line-sensor technology square
senso faucet (AC)



WF-8510.A00.50
line-sensor technology square
extend senso faucet (AC)

American Standard



**Installation & Operation
Instruction**

Thank you for selecting American-Standard - the benchmark of fine quality for over 100 years.

To ensure that your installation proceeds smoothly--please read these instructions carefully before you begin.

* American Standard always keep raising and improving the product design and performance, and reserve the right to modify the dimension and specification. At this case, we will not inform you separately.

* This installation instruction sheet is for your reference only, the dimension and specification is subject to the actual products.

All instruction procedures must comply in strict accordance with applicable local plumbing and building codes

Caution

1. Remove all the impurities in pipes before beginning to avoid clogging.
2. Water supply for this product should be drinking water. Seawater is forbidden.
3. Check installation distances with the dimension diagram to ensure correct installation.
4. To avoid surface damage by improper cleaning, please refer the attached care and Maintenance instruction.
5. Don't make the sensor window close to electromagnetic or the strong ultraviolet radiation so as not to affect the normal work of the installation.
6. Please turn off the water supply system during maintenance.
7. Keep the sensor window clean. And don't Knock on it.
8. Organic solvent shouldn't spray to the sensor window directly.

Recommended Tools and Materials



Pipe Wrench



Adjustable Wrench



Gradienter



Tapeline



Screwdriver



Pencil



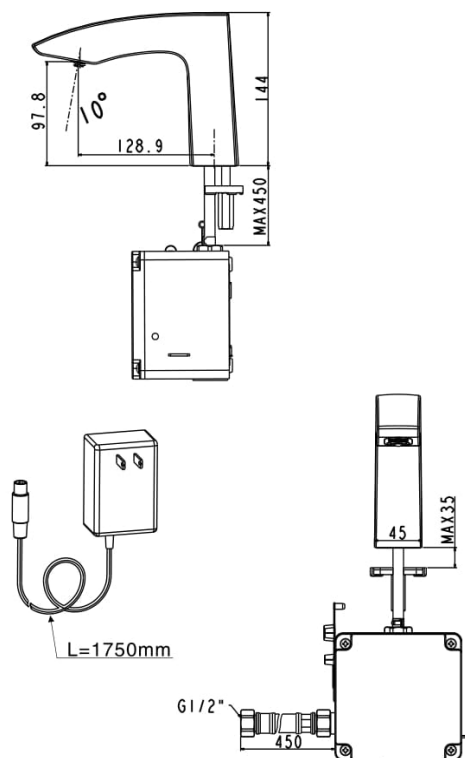
Windtight Swathe

Specification

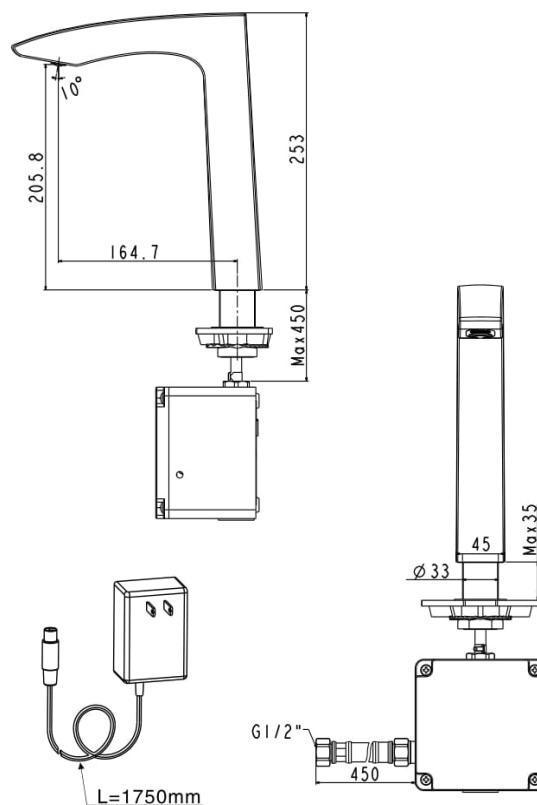
Type	WF-8506.A00.50 / WF-8507.A00.50 / WF-8509.A00.50 / WF-8510.A00.50
Power Supply	AC220V 50Hz (AC)
Mode of the inducing	Infrared Induction
Detection Distance	130mm
Recommended water pressure condition	0.05Mpa ~ 0.75Mpa
Pressure Requirement	0.1 ~ 0.55Mpa
Pipe Size	G 1/2"
Environment Temperature	1°C ~ 55°C
Acceptable water temperature	1°C ~ 45°C
Water saving setting	Usage time over 59 Seconds, it will shut off automatically

Dimension

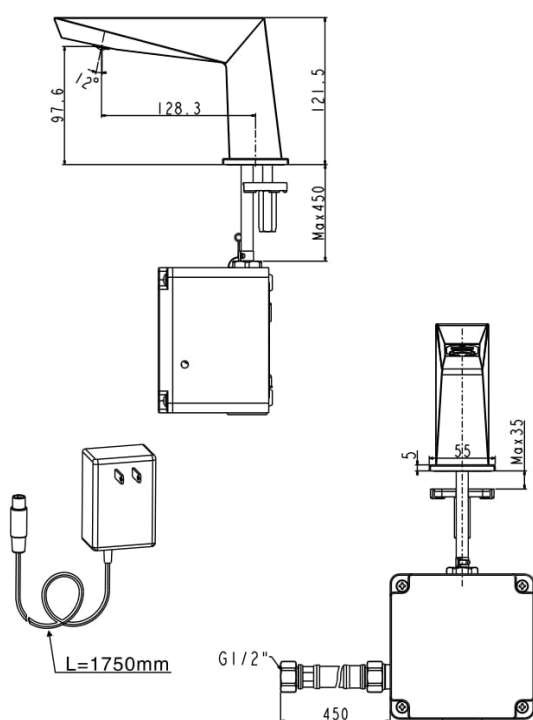
WF-8506.A00.50



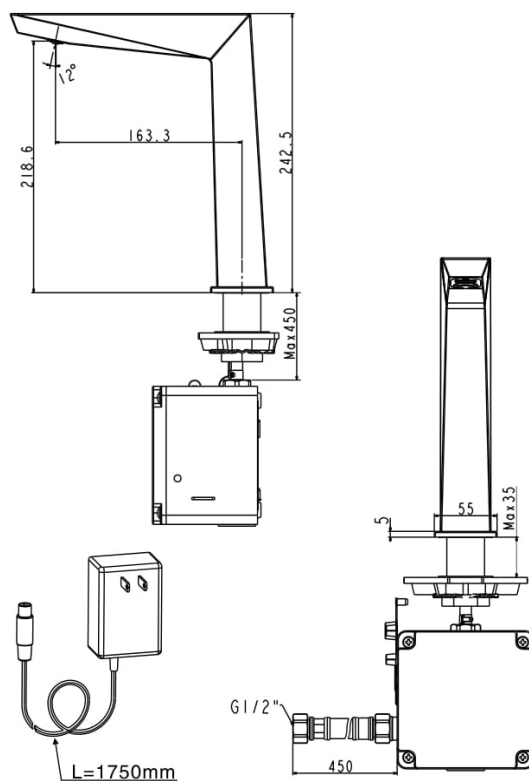
WF-8507.A00.50



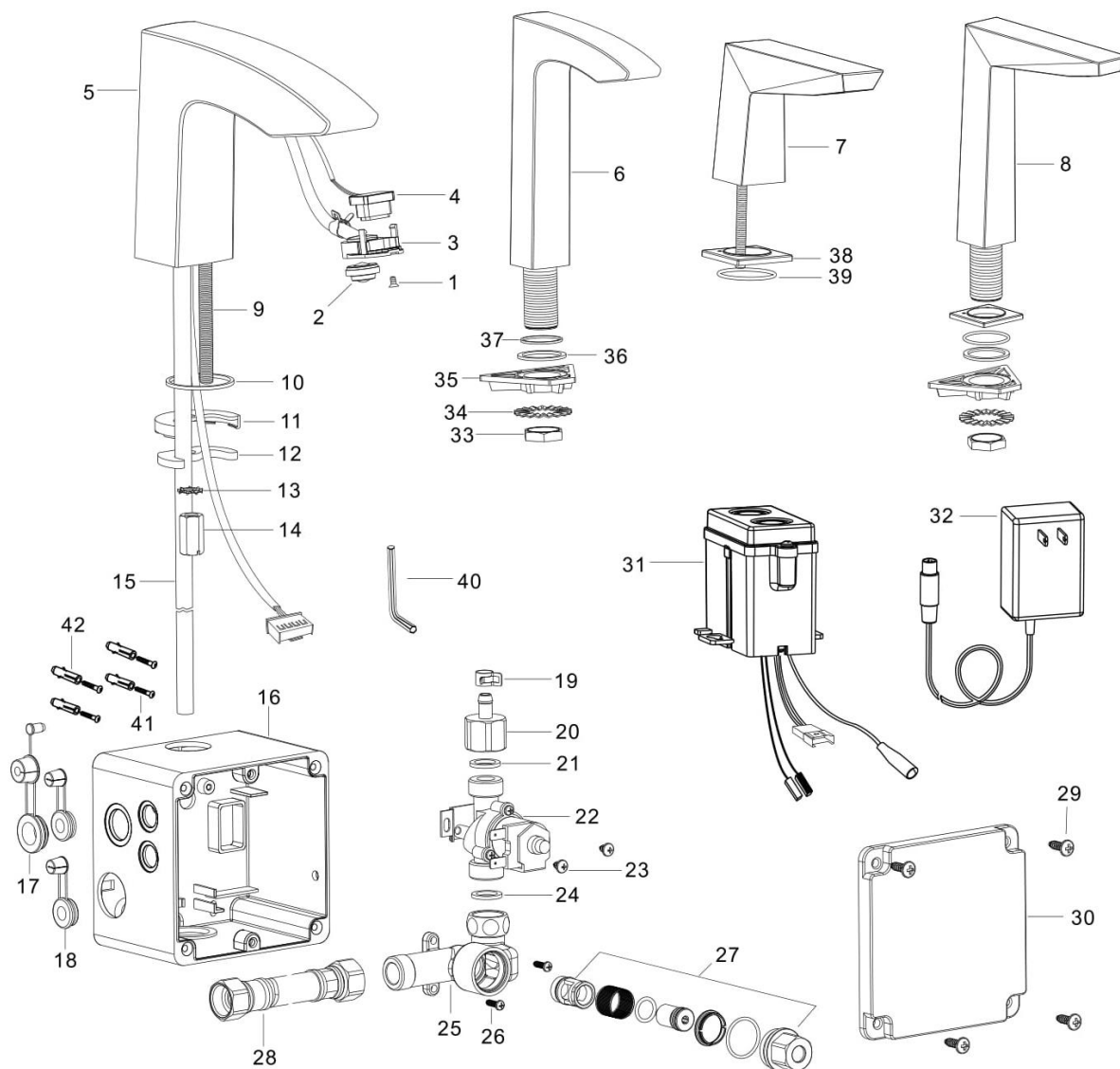
WF-8509.A00.50



WF-8510.A00.50



Parts List



Parts List

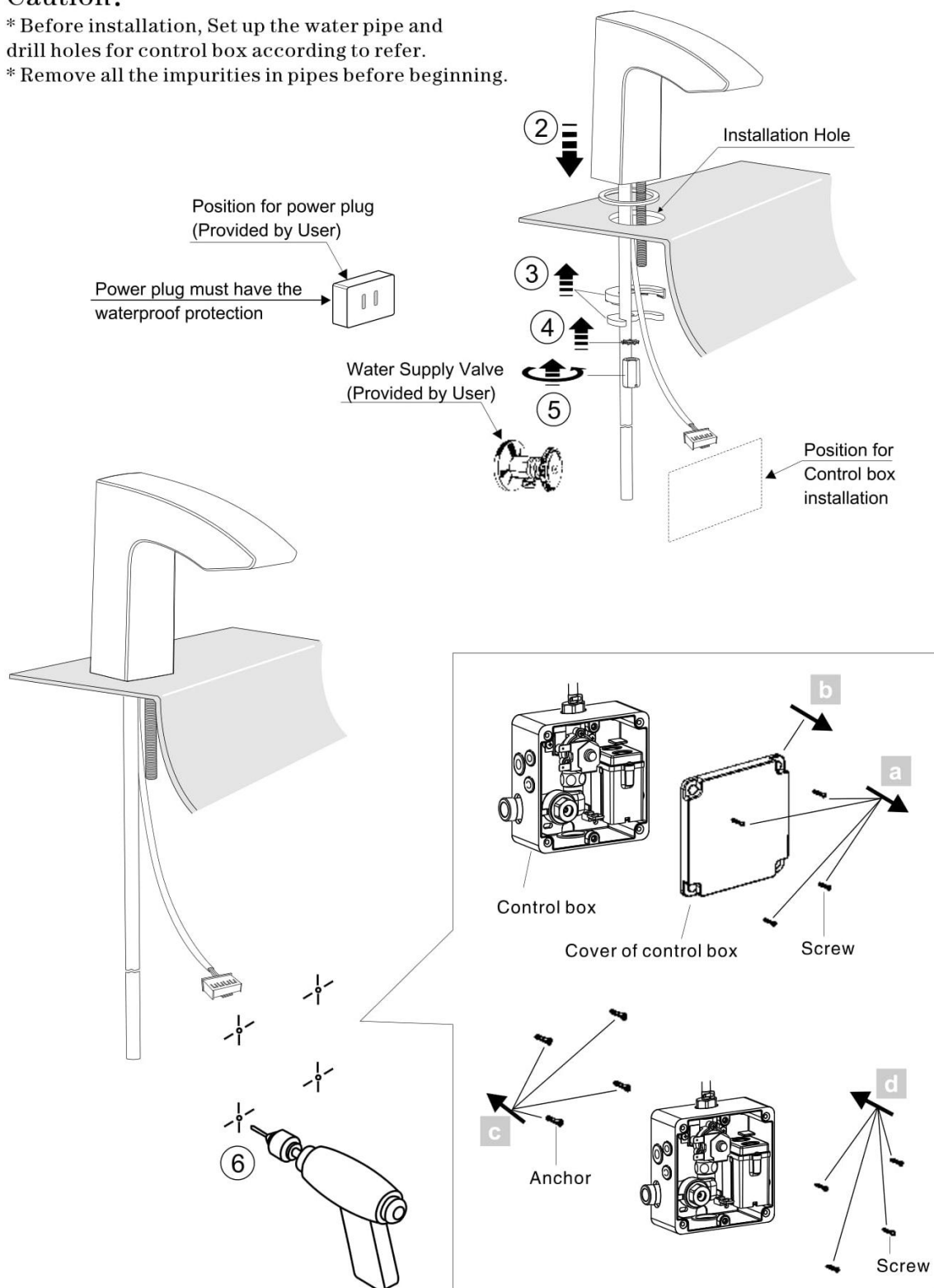
No.	Part Noame	Q'ty				No.	Part Noame	Q'ty			
		WF-8506	WF-8507	WF-8509	WF-8510			WF-8506	WF-8507	WF-8509	WF-8510
1	Screw	1	1	1	1	25	Body (Stop Valve)	1	1	1	1
2	Aerator	1	1	1	1	26	Screw	2	2	2	2
3	Sensor housing	1	1	1	1	27	Stop Valve	1	1	1	1
4	Sensor	1	1	1	1	28	Hose	1	1	1	1
5	Spout (CF-8506)	1	0	0	0	29	Screw	4	4	4	4
6	Spout (CF-8507)	0	1	0	0	30	Cover of control box	1	1	1	1
7	Spout (CF-8509)	0	0	1	0	31	Battery box	1	1	1	1
8	Spout (CF-8510)	0	0	0	1	32	Power adaptor	1	1	1	1
9	Shank	1	0	1	0	33	Nut	0	1	0	1
10	Washer	1	0	0	0	34	Washer	0	1	0	1
11	Washer	1	0	1	0	35	Plate	0	1	0	1
12	Washer	1	0	1	0	36	Washer	0	1	0	1
13	Washer	1	0	1	0	37	Washer	0	1	0	1
14	Nut	1	0	1	0	38	Cap	0	0	1	1
15	Hose	1	1	1	1	39	Washer	0	0	1	1
16	Shell of control box	1	1	1	1	40	In-hex Wrench	1	1	1	1
17	Plug (big)	1	1	1	1	41	Screw	1	1	1	1
18	Plug (small)	2	2	2	2	42	Anchor	1	1	1	1
19	Click	2	2	2	2						
20	Tie-in	1	1	1	1						
21	Washer	1	1	1	1						
22	Solenoid	1	1	1	1						
23	Screw	2	2	2	2						
24	Washer	1	1	1	1						

Installation

1 Installation for Spout and Control box

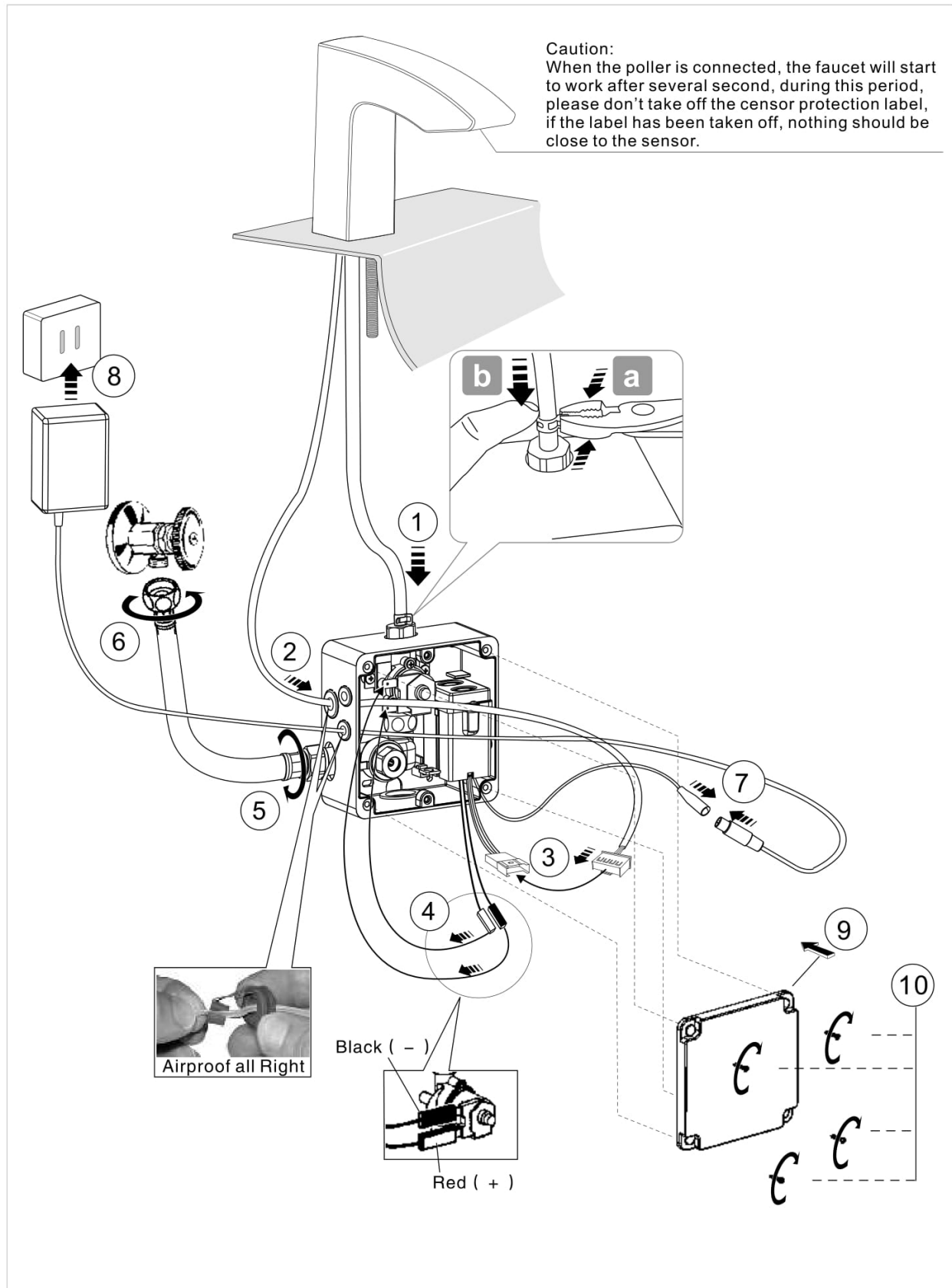
① Caution:

- * Before installation, Set up the water pipe and drill holes for control box according to refer.
- * Remove all the impurities in pipes before beginning.



Installation

2 Water pipe and electrical wire installation



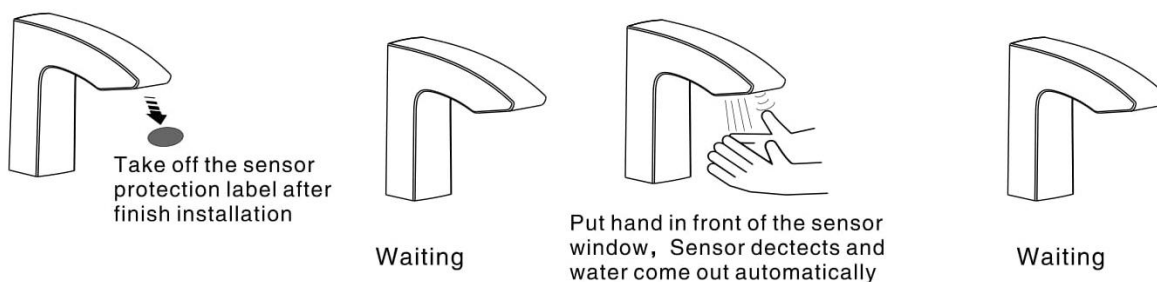
Usage Instruction

1 Test/Usage

Test

- * Make sure the connection of power and water supply.
- * Open the water supply, Make sure no leakage in all connection.
- * When enter the sensor zone, sensor detect and flush , When leave the detection zone, valve will flush again then stop, and waiting for start.
- * Make sure every thing in working order.

Usage



2 Overtime Usage Control

- * The sensor will stop working temporarily if the usage continuous 1 minute.
- * After it stop, hand or object must leave the detectioe range, when hand or object put into the detective range again, the sensor will work again, otherwise, it can't work.

3 Temperature control of Cold and Hot water mixing (Non-thermostatic valve)

- * This product is available juct for cold water if you need the cold and hot water mixing you have to add addiconal mixing valve or thermostatic valve to control the water temperature to avoid scald.

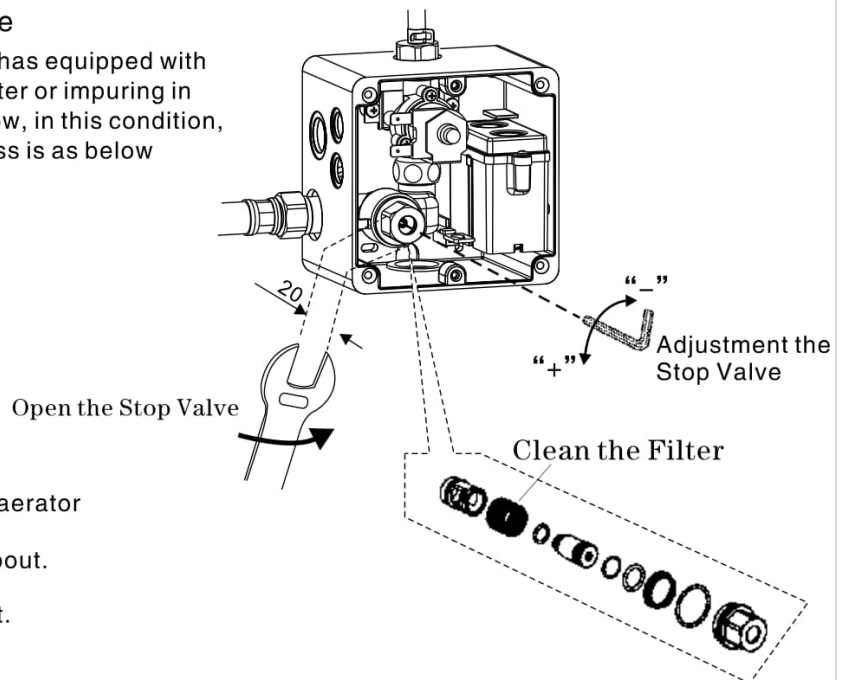
Trouble Shooting Guide

Problem	Reason	Correction
No Detection No Flow	No battery or the battery installed wrongly or no power supply Something around the sensor is detected all the time Sensor window is dirty The connection is not connected correctly	Install battery and connection power supply Remove the things around the sensor Clean the sensor window Check the connection Replace the bottery if the old one is used out
Has detection but no flow	The stop valve is closed Somethings around the sensor is detected all the time Sensor window is dirty	Open the stop valve Remove somethings around the sensor Clean the window
Low water flow	The stop valve is not opened entirely The filters are blocked Low water pressure	Open the stop valve entirely Clean the filters Contact with water supply department
Water flow nonstop	Something around the sensor is detected all the time The Solenoid Valve are blocked	Remove the things around the sensor Clean the Solenoid Valve

Care & Maintenance

1. Filter for Care & Maintenance

The Stop Valve of this sensor faucet has equipped with good quality filter, But the impure water or impuring in the water pipe will affect the water flow, in this condition, you should clean the filter, the process is as below



2. If necessary, you could clean the aerator too as per below step
- Screw off the Aerator from the Spout.
 - Clean the Aerator with water.
 - Reinstall the Aerator to the Spout.

